

The background image is a night photograph of a city street. On the right, there is a large, ornate fountain with a statue of a winged figure. In the center, a man in a dark jacket and light-colored pants stands looking down. To his left, a woman in a dark coat and glasses is walking. Further left, a man in a dark jacket and a beanie is walking. In the background, there is a large building with arched windows and doorways, illuminated by streetlights. A sign for 'POLICE' is visible on the left. The overall atmosphere is quiet and somewhat somber, reflecting the theme of the title.

lonely in the crowd

*Interaction Design
Zurich University of the Arts*

3rd Open Presentation

-

*Bachelor Thesis
Jan Huggenberg
Spring 2011*

*Mentors
Karmen Franinovic
Max Rheiner*

GOAL

GOAL

Boost communication between
strangers in urban space.

EXPERIENCE

EXPERIENCE

interactions



EXPERIENCE

interactions



EXPERIENCE

interactions



EXPERIENCE

interactions



EXPERIENCE

interactions



EXPERIENCE

interactions



EXPERIENCE

interactions



EXPERIENCE

interactions



EXPERIENCE

interactions



EXPERIENCE

interactions



EXPERIENCE

interactions



EXPERIENCE

interactions



EXPERIENCE

interactions



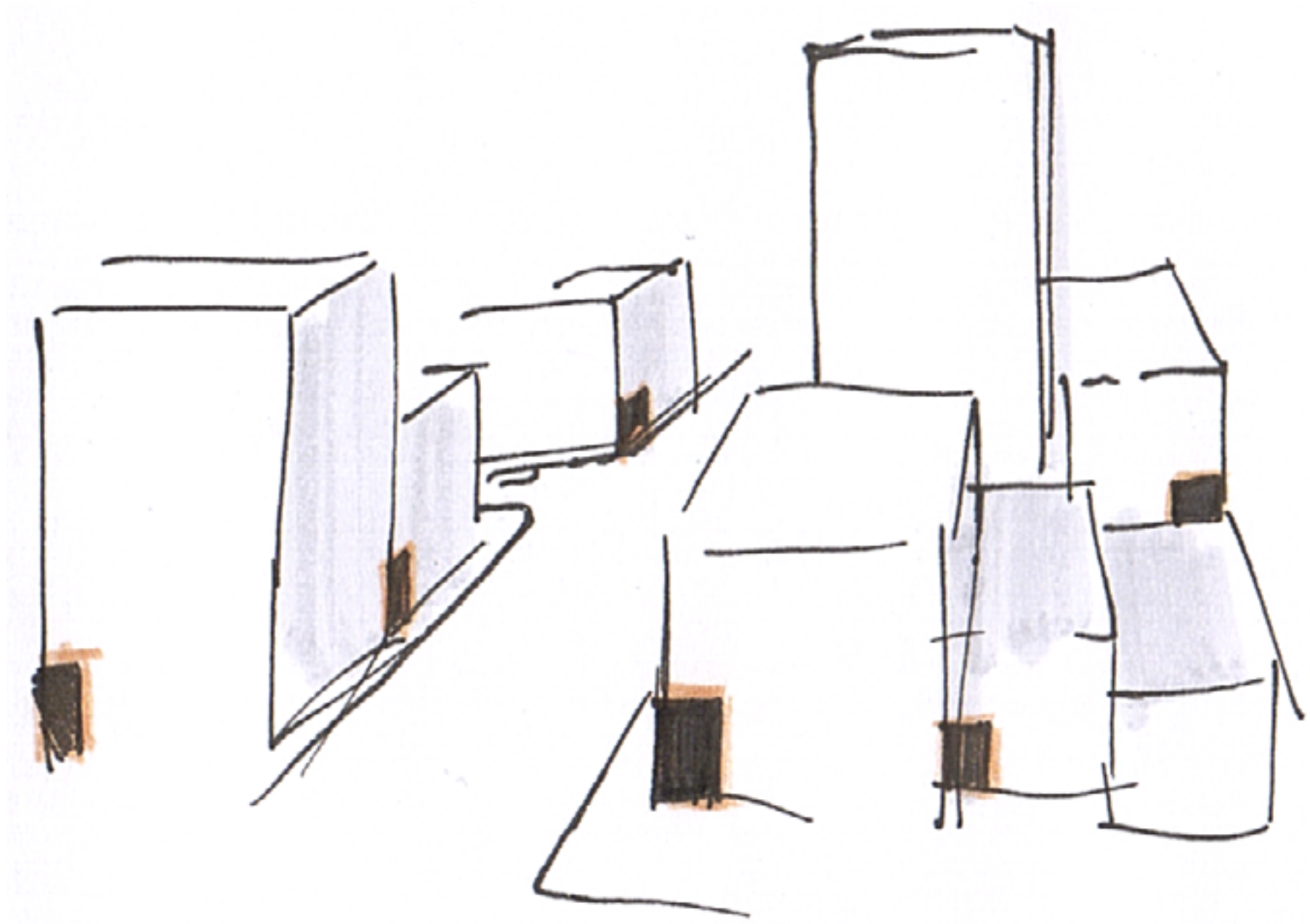
EXPERIENCE

interactions



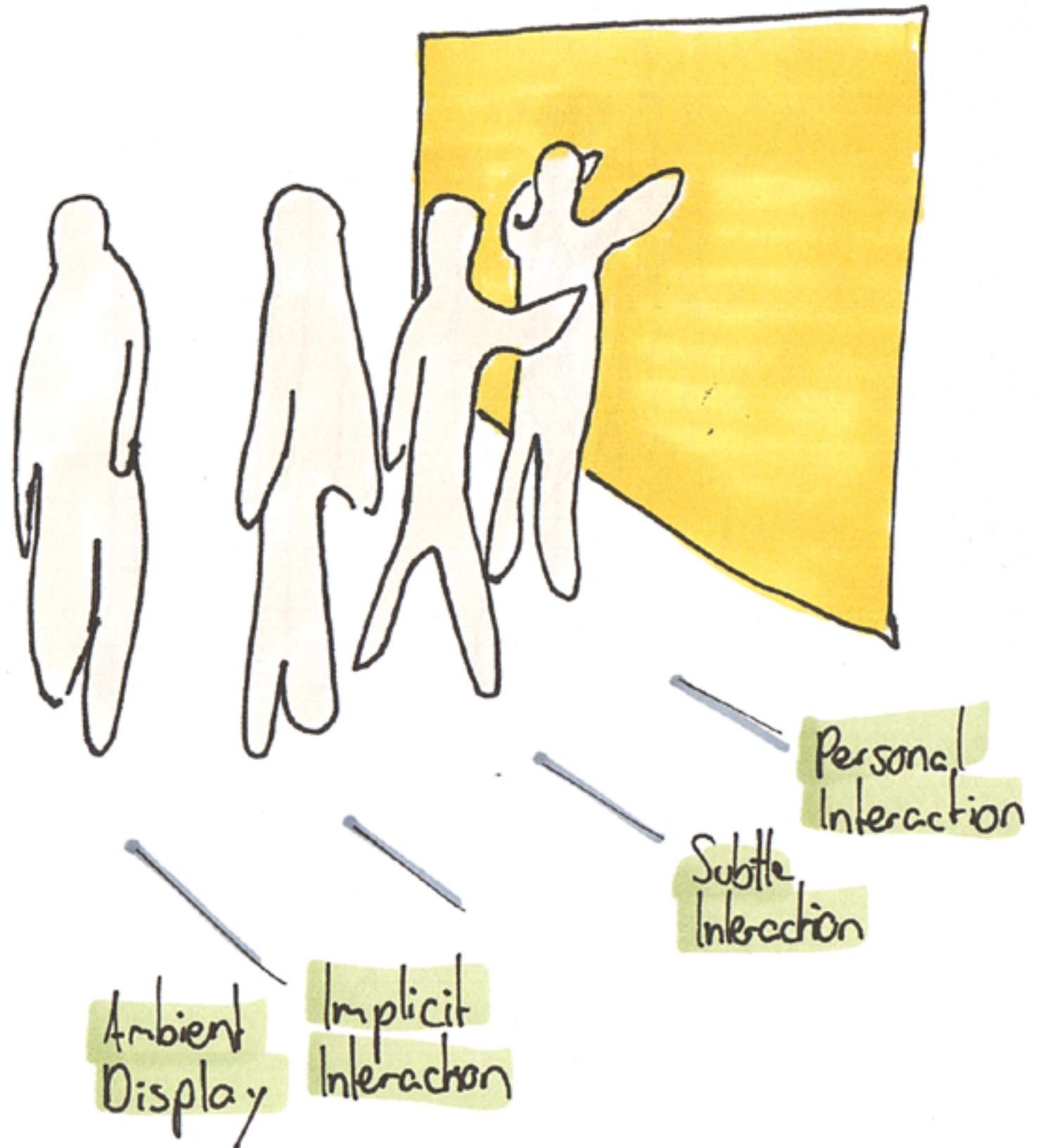
EXPERIENCE

scenario



EXPERIENCE

levels of interaction



PROTOTYPE

PROTOTYPE

technology

^ kinect depth camera

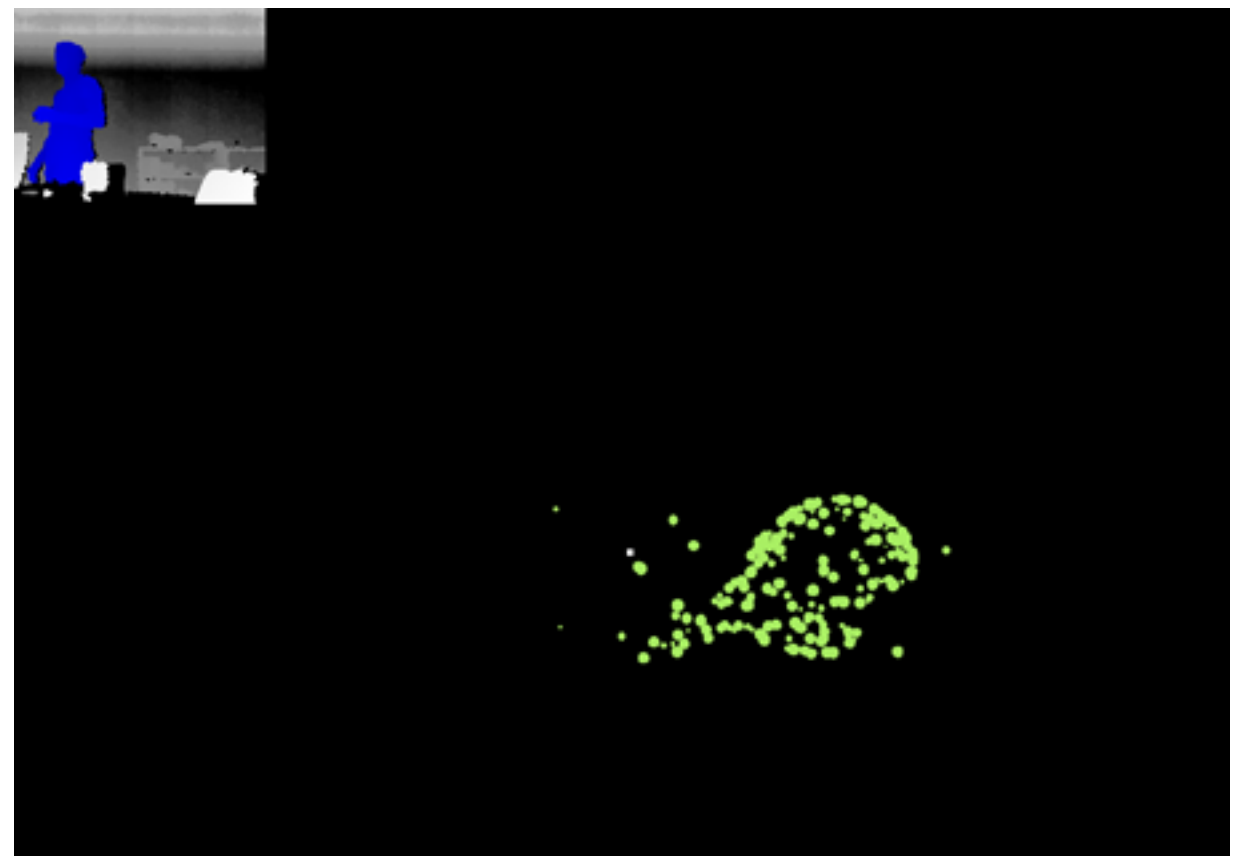
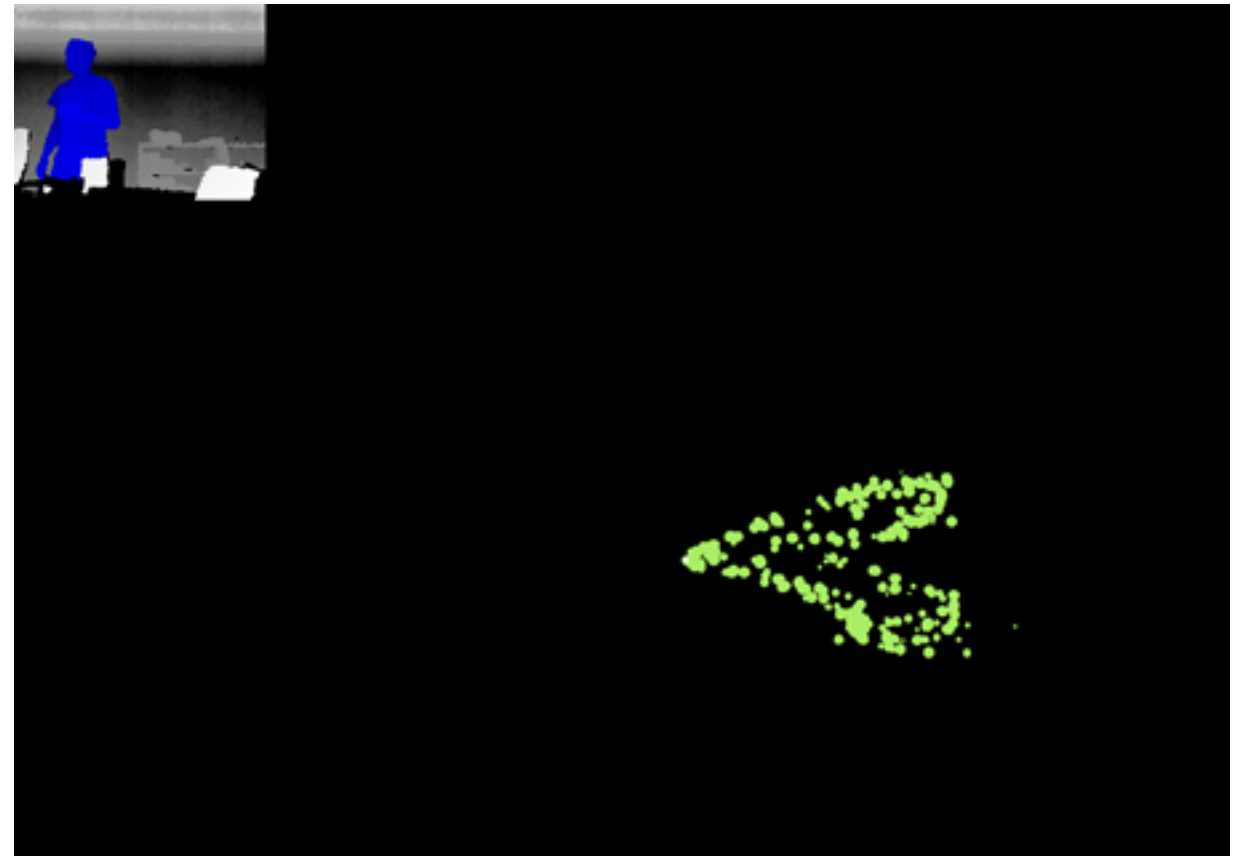
^ simple-openNI

^ processing

^ projection

PROTOTYPE

first steps
kinect & swarms

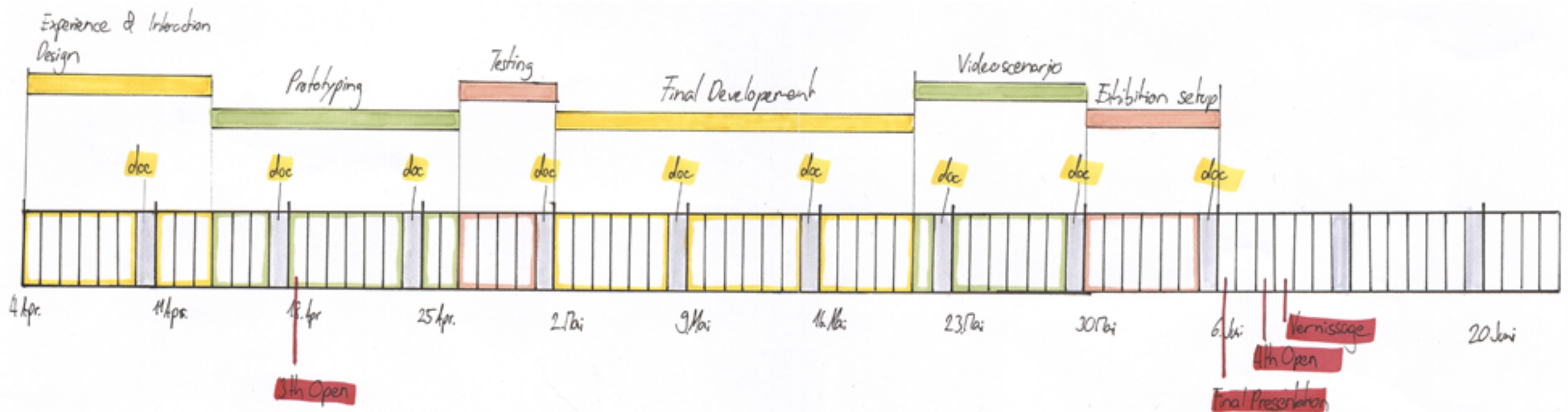


DEVELOPMENT / SCHEDULE

DEVELOPMENT / SCHEDULE

to-do

- ^ color concept
- ^ develop application
- ^ create animations
- ^ testing set-up



THANK YOU

